



The Oahu  
Illustration © 2008 Honsador LLC

MODEL 2480 EFP ◊

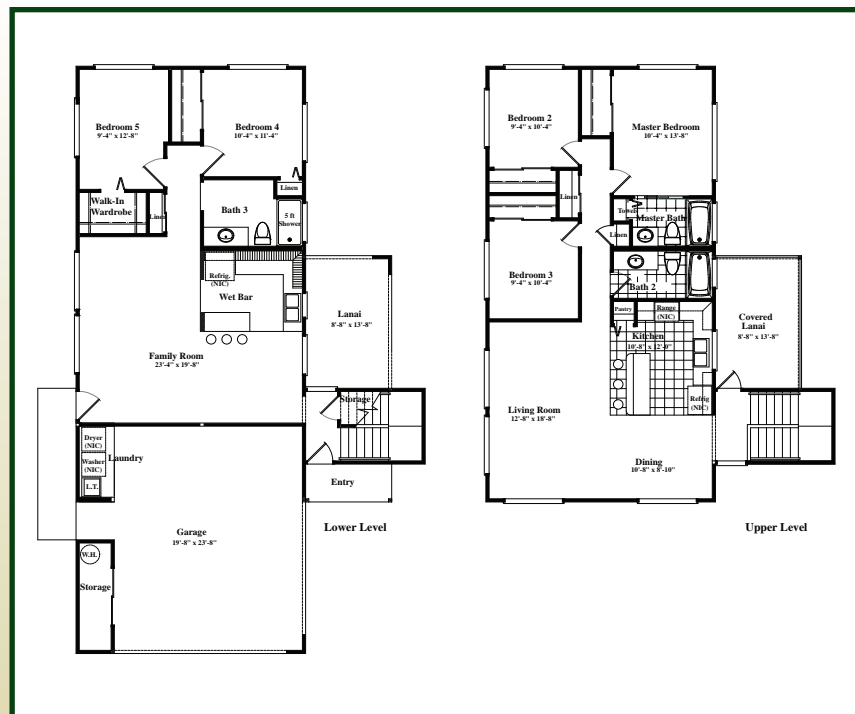
# OAHU

*"The Gathering Place"*

**TWO STORY - 5 BEDROOM,  
3 BATH  
APPROX. 2,480 SQ. FT.**

This version of the "O`ahu" finds an enhanced Wet Bar - now with an "Island" sitting/eating counter. The first floor bath now has a large shower rather than the traditional tub. The enhanced version of the O`ahu is now tweaked to be a bit better and more efficient. if that was even possible!

Truly a classy "Gathering Place".



OVERALL DIMENSIONS **36' x 64'**

**ENHANCED FLOOR PLAN**



# Honsador Lumber



### ***Packages Include:***

- Interior foundation concrete blocks, perimeter blocks and termite pans
- All structural lumber and trim where required – treated
- OSB pre-primed under-layment flooring – treated
- OSB pre-primed, panel siding – treated
- Dimensional fiberglass shingles with 30# roofing felt, 30 year warranty
- 4x8 drywall for all interior walls and ceiling, complete with mud, tape and plastic corner bead
- Insulation for Ceiling & Walls ( Exterior)
- Doors – pre-fitted machined doors complete with hinges and locks
- Windows – white vinyl sliders and jalousies complete with glass and screens
- Cabinets – pre-finished plywood box assembled with hardware for kitchen and baths
- Post form countertops/Granite - Kaua`i (Standard)
- Floor covering (Hilo/Kona only)
- House paint (Hilo/Kona only)
- Plumbing fixtures including lavatories, water closets, tub/shower unit, sink, laundry tray, garbage disposal, mirrored medicine cabinets, towel bars, toilet paper holders
- Lighting fixtures, 125 amp / 200 amp circuit panel, plugs and switches, as indicated on the plan
- Miscellaneous items include closet shelving and rods, ventilators at eaves, caulking, and all the nails and framing hardware needed to assemble the house
- Framing lumber is treated with the Hi-Bor treatment process. 20 year warranty is available thru current licensed pest control firms. Securing the warranty is your responsibility. Ask for the form explaining all procedures.

### ***Not Included:***

- Carport if shown (available on all models)
- Appliances other than noted above
- Pour in-place concrete slabs or landings
- Rough-in electrical materials such as wiring, boxes, meter box and main breaker
- Plumbing pipe
- Inter-island freight cost
- Engineering stamp, plot plan, re-drafting cost
- Building permits
- Solar system



**Honsador Lumber**

*To view more models visit us at  
[www.honsador.com](http://www.honsador.com)*

*91-151 Malakole Road, Kapolei HI 96707*

*Ph: 808.682.2011 • Fax: 808.682.5252*

**Oahu**  
91-151 Malakole Rd.  
Kapolei, HI 96707  
Ph: 808.682.2011

**Maui**  
250 Lalo Pl.  
Kahului, HI 96732  
Ph: 808.877.5045

**Hilo**  
100 Kukila St.  
Hilo, HI 96720  
Ph: 808.961.6000

**Kona**  
73-5580 Kauhola St.  
Kailua-Kona, HI 96740  
Ph: 808.329.0738

**Kauai**  
3371 Wilcox Rd.  
Lihue, HI 96766  
Ph: 808.246.2412