



THE HALE MAULOLOA*
Illustration ©2005 Honsador LLC

MODEL 1416 EFP

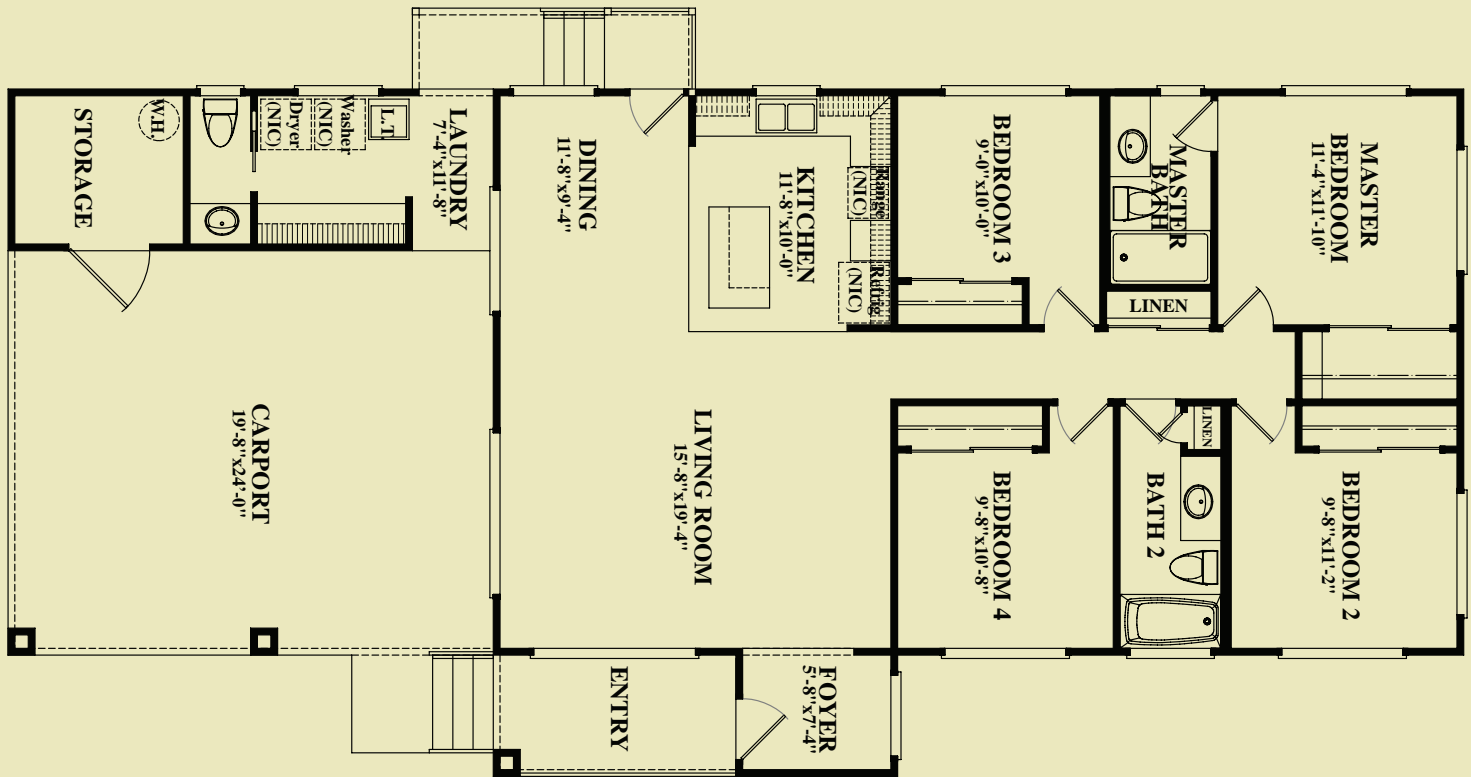
HALE MAULOLOA*

“Everlasting Home”

Island Homes

Collection[®]
by **HONSADOR**

*ENHANCED FLOOR PLAN



THE HALE MAULOA*
 Illustration ©2008 Honsador LLC

4 BEDROOM, 2-1/2 BATH, 1416 SQFT.

The Hale Mauloa has undergone some subtle changes that make it an even better value. The Storage in the Carport is better configured and now houses the water heater. The Laundry now offers a cabinet bank with counter top for folding clothes or other tasks. A full sized shower has replaced the bath tub in the Master Bath and in the 2nd Bath the Linen is now tucked in next to the vanity cabinet.

The roof line continues to give the model excellent curb appeal with its built-in carport.

*ENHANCED FLOOR PLAN

MODEL 1416 EFP

HALE MAULOA*

"Everlasting Home"

To view more models visit us at www.honsador.com